

Handwritten text in cursive script, reading "Lutheran Study".

# Rhythm Reference Patterns

## Study #1

Quarter Note



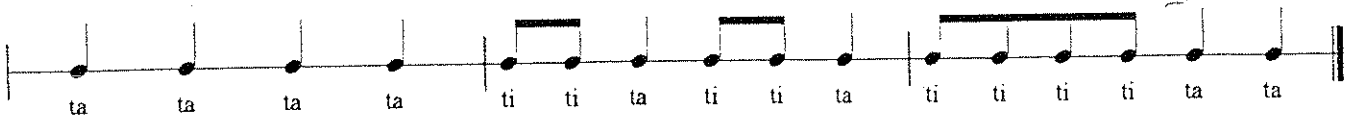
Eight Notes



Eight Notes



#1



#2



#3



## Study #2

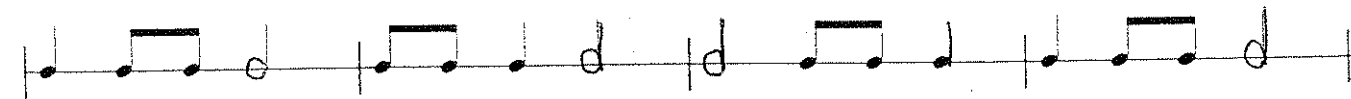
Half Note



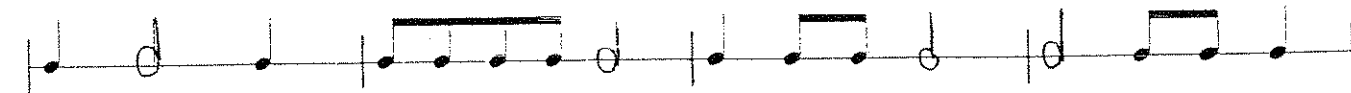
#1



#2



#3



# Study #3

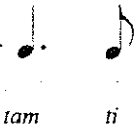
## The "Tie"

**Definition:** A tie is a symbol (line) that connects two or more notes making them sound as one.

Quarter/Eighth Tie

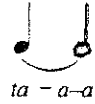


Sometimes Written:

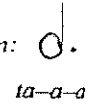


Dotted Quarter/Eighth Tie

Quarter/Half Tie



Sometimes Written:

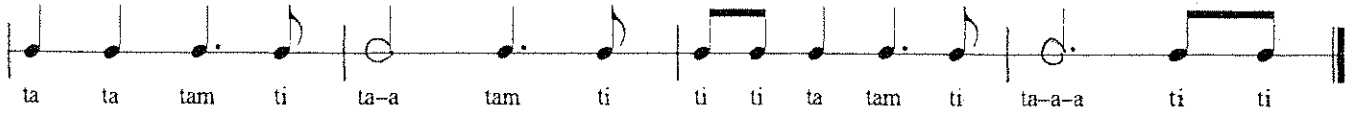


Dotted Half Note

Ex. #1



Ex. #2



Ex. #3



EX. #4



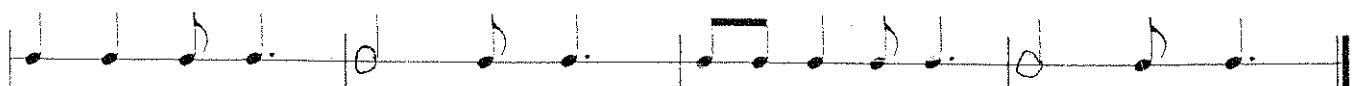
# Study #4



Ex. #1



Ex. #2



# Study #4

Continued

#3

#4

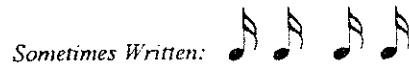
# Study #5

Beamed  
Sixteenth Notes



Mis - sis - sip - pi

Single  
Sixteenth Notes



Mis - sis - sip - pi

#1

ta ta ti ti ta Mis - sis - sip - pi ti ti Mis - sis - sip - pi ta tam ti Mis - sis - sip - pi ta

c. #2

x. #3

x. #4

# Study #6

Eighth/Two Sixteenths

Two Sixteenths/Eighth



c. #1

ta ta ti ti - ri ta ti - ri ti ti - ri ti ti ti - ri ta ta ti ti - ri ti ti - ri ta ta ti - ri ti ti - ri ti ta

c. #2

x. #3

x. #4

# Study #7

Dotted Eighth/Sixteenth

Sixteenth/Dotted Eighth



c. #1

ta ta tim - ri ta ti - rim ti - rim tim - ri ta tim - ri ta - a ti ti ta ti ti tim - ri ta

x. #2

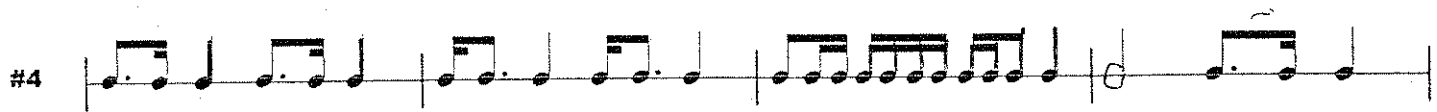
# Study #7

*Continued*

#3




#4



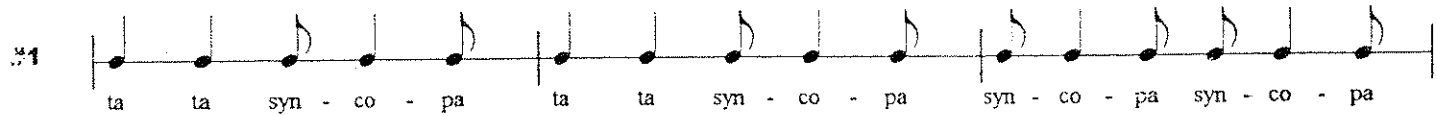
# Study #8

Eighth/Quarter/Eighth



syn - co - pa

#1

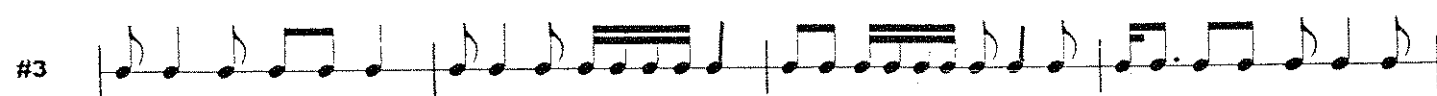


ta ta syn - co - pa ta ta syn - co - pa syn - co - pa syn - co - pa

#2



#3



#4



# Study #9

16th • 8th • 16th



#1 ta ta here - comes - da ta ta here - comes - da ta-a ta ti ti here comes- da ta

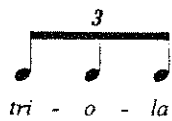
#2

#3

#4

# Study #10

Eighth Note Triplet



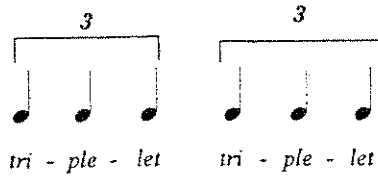
#1 ta ta ta tri - o - la ta ti ti tim - ri tri o - la ti ti - ri tri - o - la ti - rim ta

#2

#3

# Study #11

Quarter Note Triplets



#1 ta ta tri - ple - let ta ta tri - ple - let tri - ple - let ta ti ti tri - ple - let ti ti ta

#2

#3

#4

# Study #12

~A bit of everything~

#1



# Study #12

Exercise #1 Continued

10 11 12

13 14 15

16 17 18

19 20 21

22 23 24

. #2

1 2 3

4 5 6

7 8 9

10 11 12

Note: Remember notes represents sound and rest represents silence.

# Rests

*Measured silence*

## Quarter Rest



## Half Rest



#1

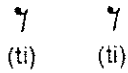
ta ta (ta) ta ta-a (ta-a) ta (ta) (ta-a) ta (ta) ta (ta)

#2

#3

#4

## Eighth Rests



#1

ti ti ti ti (ti) ti ti ti ti (ti) (ti) ti ti ti ta ti ti (ti) ti ta ta (ti) ti ta (ta)

#2

#3





~Eighth Rests Continued~

Ex. #4 

Ex. #5 

Ex. #6 

**Sixteenth Rests**




  
 (mis) (sis) (sip) (pi)

Ex. #1   
 Mis- sis - sip- pi (mis) sis - sip- pi (mis) sis - sip- pi ti ti Mis - sis (sip) pi Mis - sis (sip) pi Mis - sis - sip - pi ta


Ex. #2 

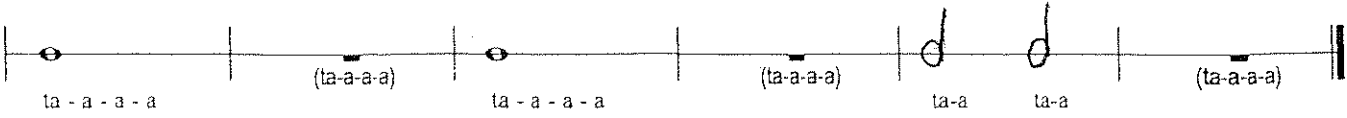
Ex. #3 

Ex. #4 

**Whole Note**

**Whole Rest**


  
 ta - a - a - a (ta - a - a - a)

  
 ta - a - a - a (ta-a-a-a) ta - a - a - a (ta-a-a-a) ta-a ta-a (ta-a-a-a)

# Putting It All Together

#1

Musical notation for exercise #1, measures 1-12. The notation is on a single staff with a treble clef. Measure 1: quarter note G4, quarter note A4, quarter note B4, quarter note C5. Measure 2: quarter note D5, quarter note E5, quarter note F5, quarter rest. Measure 3: quarter note G4, quarter note A4, quarter note B4, quarter note C5. Measure 4: quarter note D5, quarter note E5, quarter note F5, quarter note G4. Measure 5: eighth note G4, eighth note A4, eighth note B4, eighth note C5, eighth note D5, eighth note E5, eighth note F5, eighth note G4. Measure 6: quarter note G4, quarter note A4, quarter note B4, quarter note C5. Measure 7: quarter note G4, quarter note A4, quarter note B4, quarter note C5. Measure 8: eighth note G4, eighth note A4, eighth note B4, eighth note C5, eighth note D5, eighth note E5, eighth note F5, eighth note G4. Measure 9: quarter note G4, quarter note A4, quarter note B4, quarter note C5. Measure 10: eighth note G4, eighth note A4, eighth note B4, eighth note C5, eighth note D5, eighth note E5, eighth note F5, eighth note G4. Measure 11: quarter note G4, quarter note A4, quarter note B4, quarter note C5. Measure 12: quarter note D5, quarter note E5, quarter note F5, quarter note G4.

#2

Musical notation for exercise #2, measures 1-12. The notation is on a single staff with a treble clef. Measure 1: quarter note G4, quarter note A4, quarter note B4, quarter note C5. Measure 2: quarter rest, quarter note D5, quarter note E5, quarter note F5. Measure 3: quarter note G4, quarter note A4, quarter note B4, quarter note C5. Measure 4: quarter note D5, quarter note E5, quarter note F5, quarter note G4. Measure 5: quarter note G4, quarter note A4, quarter note B4, quarter note C5. Measure 6: quarter note D5, quarter note E5, quarter note F5, quarter note G4. Measure 7: quarter note G4, quarter note A4, quarter note B4, quarter note C5. Measure 8: quarter note D5, quarter note E5, quarter note F5, quarter note G4. Measure 9: quarter note G4, quarter note A4, quarter note B4, quarter note C5. Measure 10: eighth note G4, eighth note A4, eighth note B4, eighth note C5, eighth note D5, eighth note E5, eighth note F5, eighth note G4. Measure 11: quarter note G4, quarter note A4, quarter note B4, quarter note C5. Measure 12: quarter note D5, quarter note E5, quarter note F5, quarter note G4.

~Continue putting it together~


x. #3

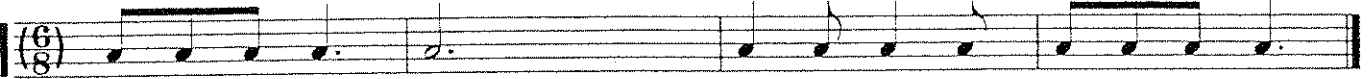
Musical notation for exercise x. #3, measures 1-12. The exercise is written on a single staff. Measure 1: quarter note G4, quarter note A4, quarter note B4, quarter note C5. Measure 2: quarter note D5, quarter note E5, quarter note F5, half note G5. Measure 3: quarter rest, quarter note G4, quarter note F4, quarter note E4. Measure 4: whole note D4. Measure 5: quarter note D4, quarter note E4, quarter rest, quarter rest, quarter note G4. Measure 6: eighth note G4, eighth note A4, eighth note B4, eighth note C5, eighth note D5, eighth note E5, eighth note F5, eighth note G5, quarter note F5, quarter note E5, quarter note D5. Measure 7: quarter note D4, quarter note E4, quarter note F4, quarter note G4. Measure 8: quarter note D4, quarter note E4, quarter note F4, quarter note G4, quarter note A4, quarter note B4, quarter note C5, quarter note D5. Measure 9: quarter note D5, quarter note E5, quarter note F5, quarter note G5, quarter note F5, quarter note E5, quarter note D5. Measure 10: quarter note D4, quarter note E4, quarter note F4, quarter note G4, quarter note A4, quarter note B4, quarter note C5, quarter note D5. Measure 11: quarter note D5, quarter note E5, quarter note F5, quarter note G5, quarter note F5, quarter note E5, quarter note D5. Measure 12: quarter note D4, quarter note E4, quarter note F4, quarter note G4, quarter note A4, quarter note B4, quarter note C5, quarter note D5. The exercise ends with a double bar line.

x. #4


Musical notation for exercise x. #4, measures 1-12. The exercise is written on a single staff. Measure 1: quarter note G4, quarter note A4, quarter note B4, quarter note C5. Measure 2: quarter note D5, quarter note E5, quarter note F5, quarter note G5, quarter note F5, quarter note E5, quarter note D5, quarter rest. Measure 3: quarter note G4, quarter note F4, quarter note E4, quarter note D4, quarter note C4, quarter note B3, quarter note A3, quarter note G3. Measure 4: quarter note G3, quarter note F3, quarter note E3, quarter note D3, quarter note C3, quarter note B2, quarter note A2, quarter note G2. Measure 5: quarter note G2, quarter note F2, quarter note E2, quarter note D2, quarter note C2, quarter note B1, quarter note A1, quarter note G1. Measure 6: quarter note G1, quarter note F1, quarter note E1, quarter note D1, quarter note C1, quarter note B0, quarter note A0, quarter note G0. Measure 7: quarter note G0, quarter note F0, quarter note E0, quarter note D0, quarter note C0, quarter note B-1, quarter note A-1, quarter note G-1. Measure 8: quarter note G-1, quarter note F-1, quarter note E-1, quarter note D-1, quarter note C-1, quarter note B-2, quarter note A-2, quarter note G-2. Measure 9: quarter note G-2, quarter note F-2, quarter note E-2, quarter note D-2, quarter note C-2, quarter note B-3, quarter note A-3, quarter note G-3. Measure 10: quarter note G-3, quarter note F-3, quarter note E-3, quarter note D-3, quarter note C-3, quarter note B-4, quarter note A-4, quarter note G-4. Measure 11: quarter note G-4, quarter note F-4, quarter note E-4, quarter note D-4, quarter note C-4, quarter note B-5, quarter note A-5, quarter note G-5. Measure 12: quarter note G-5, quarter note F-5, quarter note E-5, quarter note D-5, quarter note C-5, quarter note B-6, quarter note A-6, quarter note G-6. The exercise ends with a double bar line.

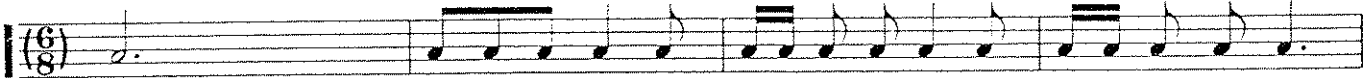
6  
8 A Different Meter  
*a different feel*

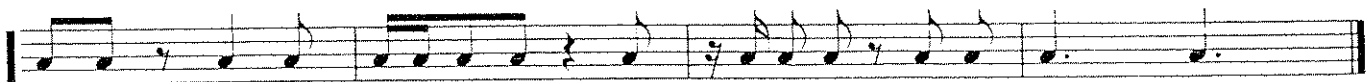
x. #1    
*ti ti ti ti ti ti ta ti ta ti ta-i ta-i ta-i-a-i*

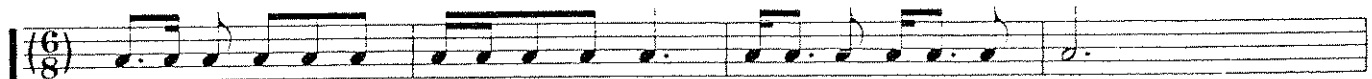
Ex. #2 


Ex. #3    
*ti - ri*

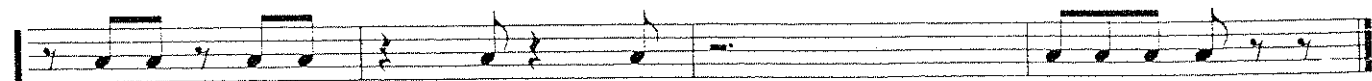
Ex. #4 

Ex. #5 



EX. #6 





*ti ti ti ti*

# Cut Time

Two ticks per measure

Ex. #1

ti ti ti ti ti - ri ti ta ti ti ta ti - ri ti ta

Ex. #2

Mis - sis - sip - pi



Ex. #3



EX. #4





tim - ri tim - ri ti - rim









tri - o - la Tri - ple - let





# Note Chart

Common time  ta-a-a-a  
Ct Time  ta-a

 ta-a  
 ta-a  
ta ta

 ta  
 ta  
 ta  
 ta  
ti ti ti ti

 ti  
 ti  
 ti  
 ti  
 ti  
 ti  
 ti  
 ti  
mis - sis - sip - pi mis - sis - sip - pi

 mis - sis - sip - pi  
 mis - sis - sip - pi  
 mis - sis - sip - pi  
 mis - sis - sip - pi  
kid - dy kid - dy kid - dy kid - dy kid - dy kid - dy kid - dy kid - dy